

**A R G E N T**

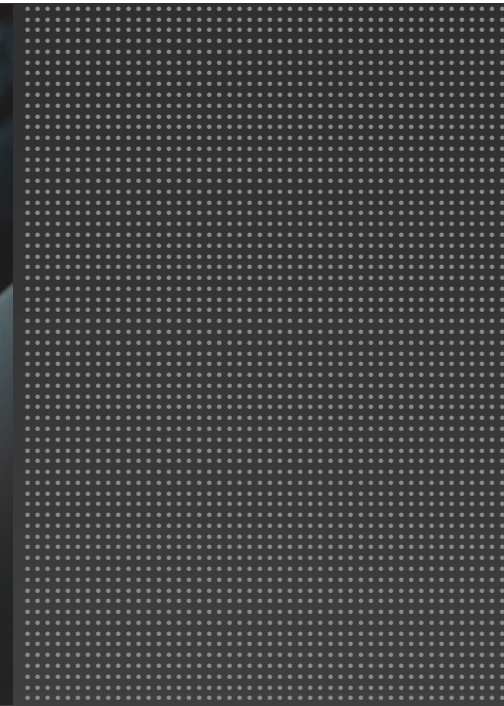
# Comparison Paper

Argent for SharePoint

vs.

Microsoft SCOM

SharePoint Management Pack



# Contents

<b>Overview</b>	3
<b>Critical Differences</b>	4
<b>Installation And Implementation Differences</b>	6
<b>Critical Features</b>	7
<b>Customers Who Looked At Both Argent and SCOM</b>	12

# Overview

This document compares and contrasts the monitoring and alerting capabilities in Argent for SharePoint against Microsoft SCOM's SharePoint Management Pack.

There are many important differences between the products, as well as differences in the two companies' pricing philosophies; there are also fundamental differences between the two companies' policies for handling technical support and enhancement requests.

# Critical Differences

Argent provides a comprehensive and complete set of instrumentation for monitoring SharePoint services and features using a monitoring agent. Argent is designed from the ground up to scale from the smallest to the largest of SharePoint environments.

Argent also provides a greater depth of monitoring, and a consistent interface with no learning curve and no need for complex scripts. Argent installs in under 10 minutes, and is fully operational “out of the box.”

The following information has been collected from Argent customers who evaluated both products and selected Argent as their standard SharePoint monitoring solution. The following analysis also contains information from trade reviews, press releases, and web site analysis.

The following tables contain critical production-monitoring requirements. The Argent monitoring products support all these critical requirements.

Rules	Description	Argent	Microsoft
Customizable	Delete extremes, use average, save performance data, post events	Yes	No
Monitoring Rules	Excessive Event Rules Excessive keywords, SSP, properties, user profiles, Web Apps, number of sites, deep subsites	Yes	No
Excessive Event	Deep Crawls, Excessive Crawls	Yes	No
Rules File System	File size, folder limits	Yes	No
System Uptime Rules	SLA uptime, System Down Alerts	Yes	Yes
Performance Rules	Formula Expressions and thresholds	Yes	Yes
Custom Powershell scripts	Allows custom Powershell scripts	Yes	No
Services Uptime	Checks for stopped or stalled services running on a server	Yes	Yes
System Command	Allows system commands, batch files, and executables. Then monitor outcome codes	Yes	No
WMI Rules	Allows for WMI scripts	Yes	No

Alerts	Description	Argent	Microsoft
Monitoring Groups	Allows for grouping of monitoring rules	Yes	No
Relators	Relators Ties together the functions of Rules, Monitoring Groups, and Alerts	Yes	No
Centralized view of all Events and Alerts	All servers all Alerts and view of Argent SuperMaps – show where the servers are in the world	Yes	No
Scheduled Monitoring Tasks	Schedules for upcoming Relators	Yes	No
CMDB-X	An extensible database of servers and devices in your environment	Yes	No

Advanced Features	Description	Argent	Microsoft
Macros	A collection of items that can be reused – such as emails and logins	Yes	No
Calendars	Calendars Provide maximum flexibility when scheduling events	Yes	No
Automatic Report Distribution	Automatically send out reports at a pre-defined time	Yes	No
Excessive Event Rules	Excessive Event Rules Excessive keywords, SSP, properties, user profiles, Web Apps, number of sites, deep subsites	Yes	No
MOSS Search Rules	Deep Crawls, Excessive Crawls	Yes	No
System Command	Allows system commands, batch files, and executables. Then monitor outcome codes	Yes	No

# Installation and Implementation Differences

Argent for SharePoint's Monitoring Engine must be installed on all web front-end servers, and the main engine can be installed on any server. Argent for SharePoint installs in under seven minutes, featuring a simple setup wizard.

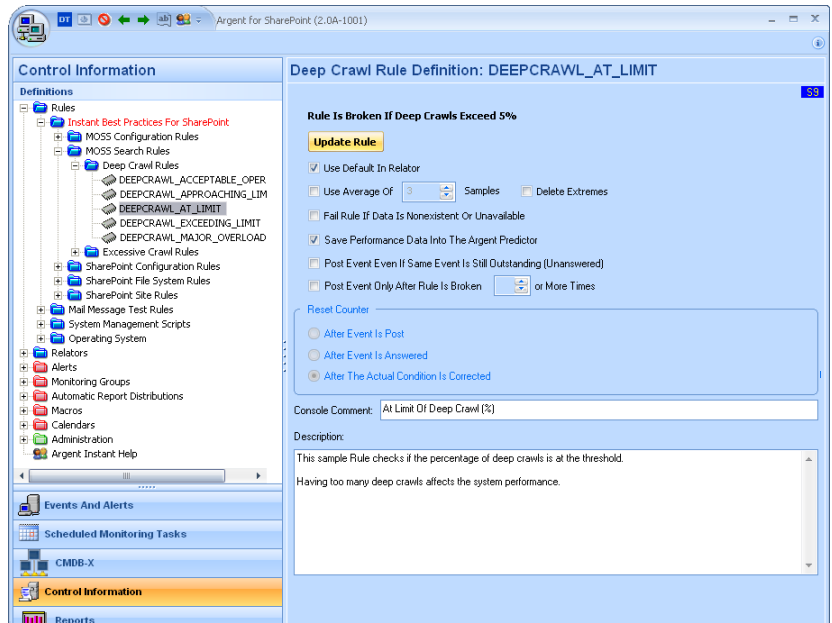
For SCOM, monitoring agents must be installed on ALL servers. Also, some additional configuration of the MOM 2005 agent may be necessary for monitoring Microsoft Office SharePoint Server 2007.

# Critical Features

Argent provides a number of essential features that are not provided by Microsoft SCOM. Here are just a few:

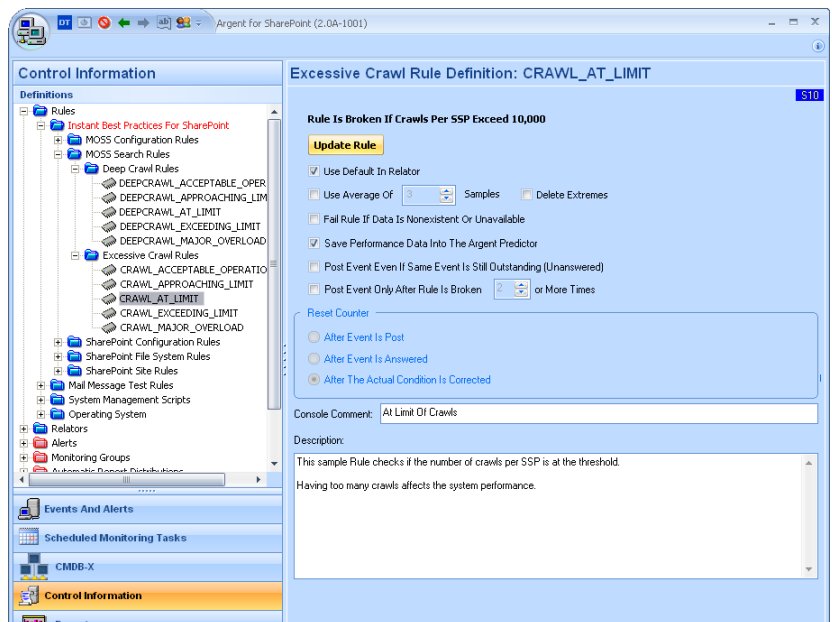
## Unique to Argent: Deep Crawl Rules

These Argent Rules check if the percentage of deep crawls per site exceeds a certain threshold.



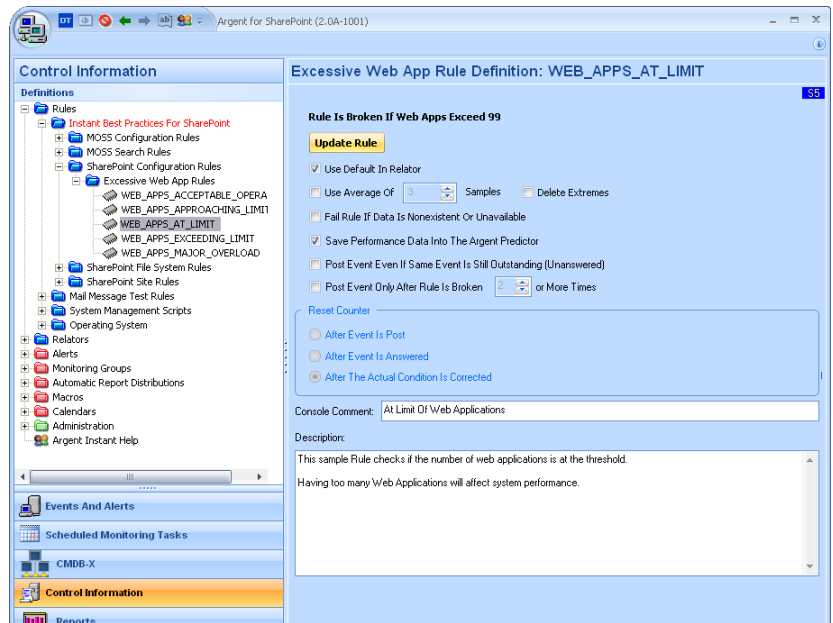
## Unique to Argent: Excessive Crawl Rules

These Argent Rules check if the number of crawls per SSP exceeds a certain threshold. SSP stands for Shared Service Providers. SSPs allow SharePoint administrators to centrally manage and share certain services between various sites, such as profile information obtained from an Active Directory.



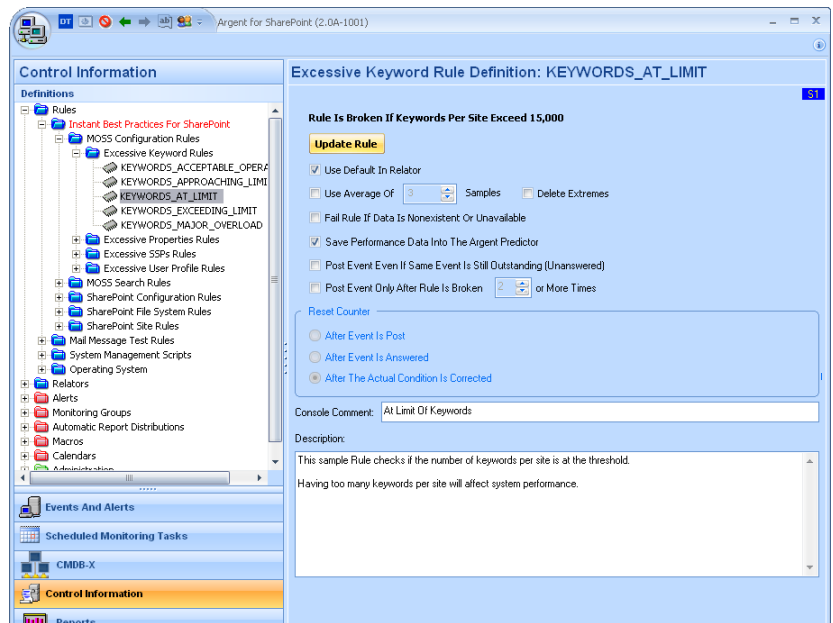
## Unique to Argent: Excessive Web App Rules

These Argent Rules check if the number of web applications exceeds a certain threshold.



## Unique to Argent: Excessive Keyword Rules

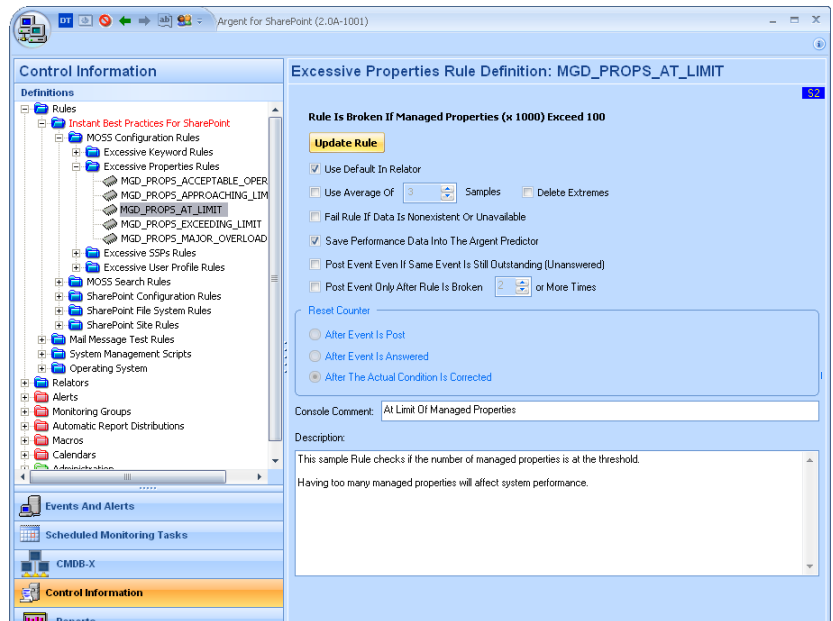
These Argent Rules check if the number of keywords per site exceeds a certain threshold.





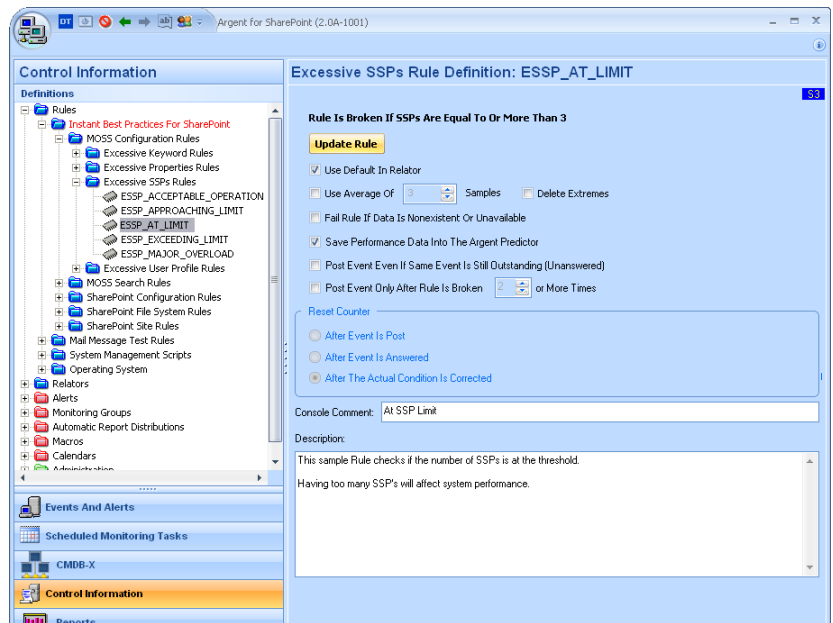
## Unique to Argent: Excessive Properties Rules

These Argent Rules check if the number of managed properties exceeds a certain threshold. Managed Properties are mapped properties such as the author, title or subject of a document.



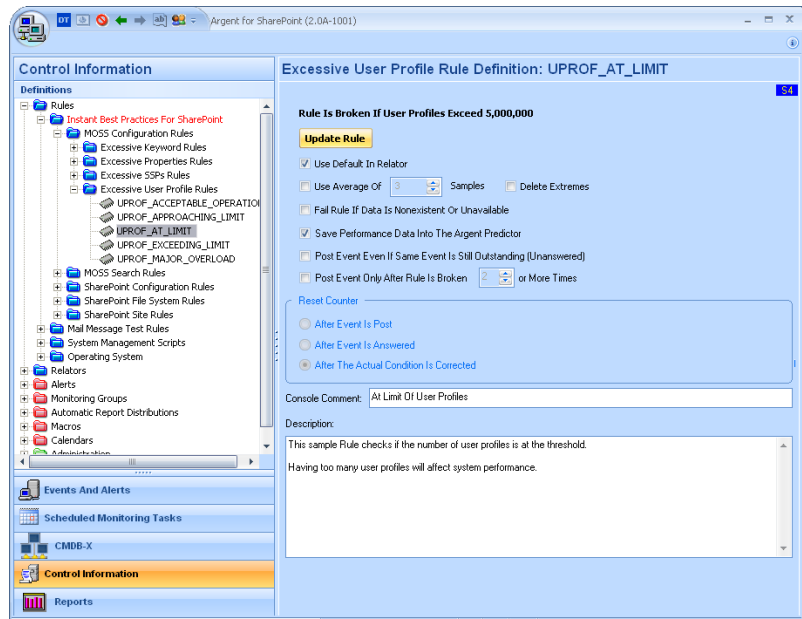
## Unique to Argent: Excessive SSPs Rules

These Argent Rules check if the number of SSPs exceeds a certain threshold. SSP stands for Shared Service Providers. SSPs allow SharePoint administrators to centrally manage and share certain services between various sites, such as profile information obtained from an Active Directory.



## Unique to Argent: Excessive User Profile Rules

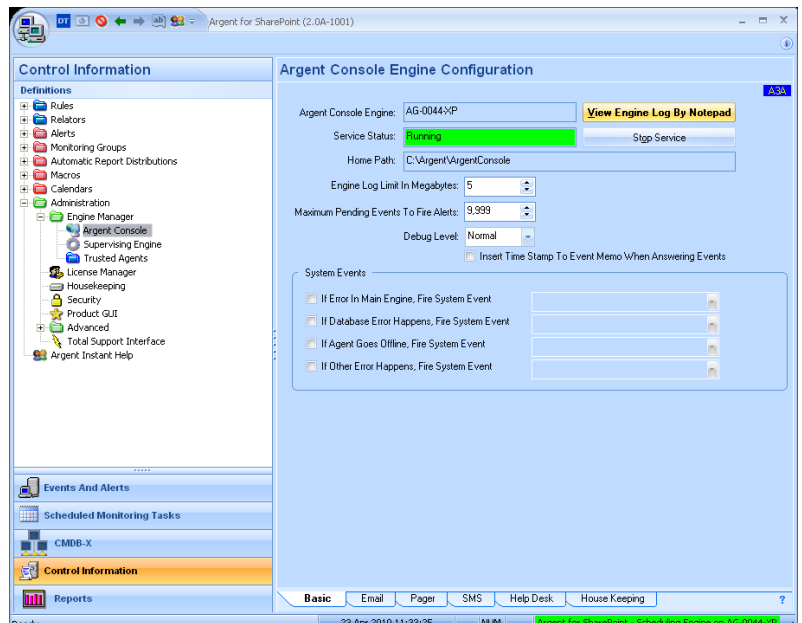
These Argent Rules check if the number of user profiles exceeds a certain threshold.



## Unique to Argent: Argent Console

The Argent Console Administration area configures the maximum number of events to fire, Automatic Alert Archiving, as well as Argent Alert Executors.

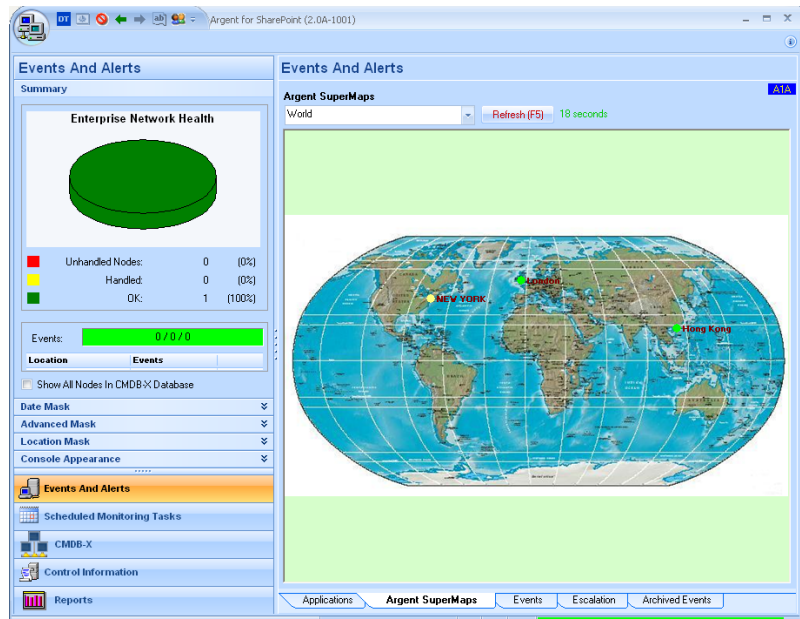
One of the most useful features on this screen is the View Engine Log by Notepad button, which provides you with a full audit log of events that occurred through Argent for SharePoint.



## Unique to Argent: Argent SuperMaps

The Argent SuperMaps facility allows you to view the status of the entire enterprise in a graphical fashion. Any type of image can be used -- geographical maps, data center diagrams, even corporate schematics (such as Visio diagrams).

Any JPEG, BMP, or DIB format can be used.



# Customers Who Looked At Both Argent and SCOM

When you are evaluating monitoring solutions for SharePoint, **one important criterion should be referenced**: You should ask each vendor for customers who have evaluated multiple monitoring solutions, and then speak to the customers to find out why these customers selected one product over the others.

The following are specific examples of monitoring and alerting functions and features that Microsoft SCOM either does not offer, or does so only in an insufficient way. If you would like to learn more about how Argent provides features that Microsoft SCOM does not, please contact Argent at [help.Argent.com](mailto:help.Argent.com)

## Administration

- Technical support commitment 24 hours a day, 365 days a year, weekends, holidays, around the clock.

---

- Argent Console

---

- Argent SuperMaps

## Alerting

### Argent Correction Alerts

- PowerShell Alerts

---

- WMI Alerts

---

- SNMP Alerts

---

- ODBC Query Alerts

### Argent Notification Alerts

- Email Alerts

---

- Event Log Alerts

---

- System Alarm Alerts

Note: Product names and other trademarks referred to in this comparison paper are the property of their respective trademark holders. ArgSoft Intellectual Property Holdings Limited created this Comparison Paper for informational purposes only. ArgSoft makes no warranty, either express or implied, in this document. The information contained in this document is subject to change without notice. ArgSoft shall not be liable for any technical or editorial errors, or omissions contained in this document, nor for incidental, indirect or consequential damages resulting from the furnishing, performance, or use of the material contained in this document, or the document itself.