

Argent White Paper

Monitoring SSL Certificates With Argent Omega At No Cost

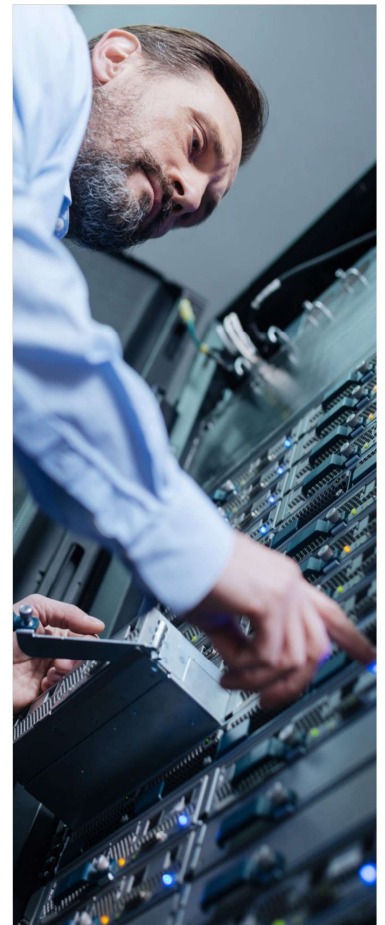
Why Are SSL Certificates So Critical?

SSL certificates are used to verify to users that your website is legitimate.

They also provide encryption of the internet traffic between the user's browser and your website.

When an SSL certificate expires, all traffic between the user's browser and your website will no longer be encrypted – sensitive customer data such as credit card and home address information will be exposed in plain text to hackers.

Hello, Class Action lawsuits.

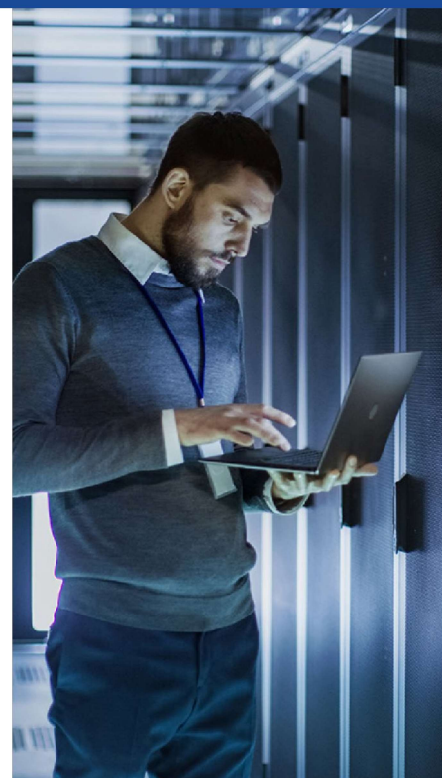


Monitoring expired SSL certificates is an essential but often overlooked job.

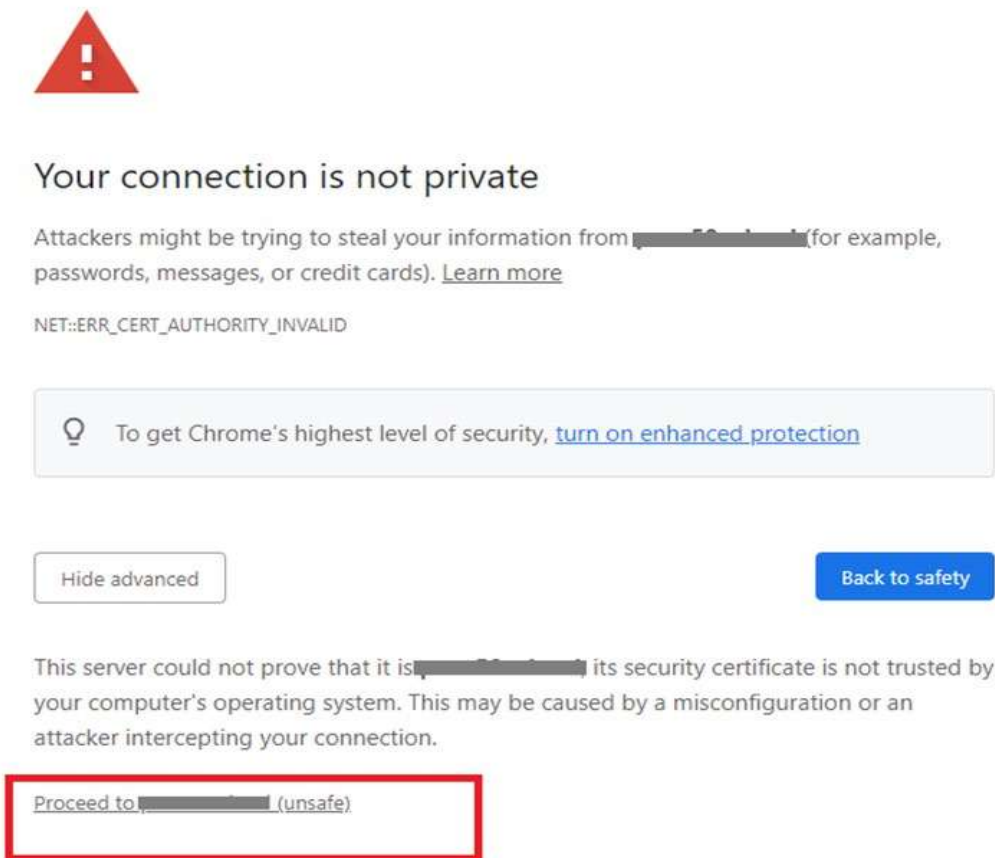
An expired SSL certificate needlessly creates panic.

Panic, because your critical website is offline.

Needlessly, because Argent can monitor SSL certificates at no cost to you.



The web browser will immediately warn any visitor trying to access the website that the site is unsafe and that hackers might be trying to steal their information (See example warning message below from the Google Chrome browser).



And...

Using an expired certificate also results in failed audits and regulatory fines.



Why Do SSL Certificates Expire?

The SSL regulatory body for the SSL/TLS industry requires that SSL certificates do not last longer than one year; can be shorter.

This ensure your website's authenticity is validated on a regular basis.

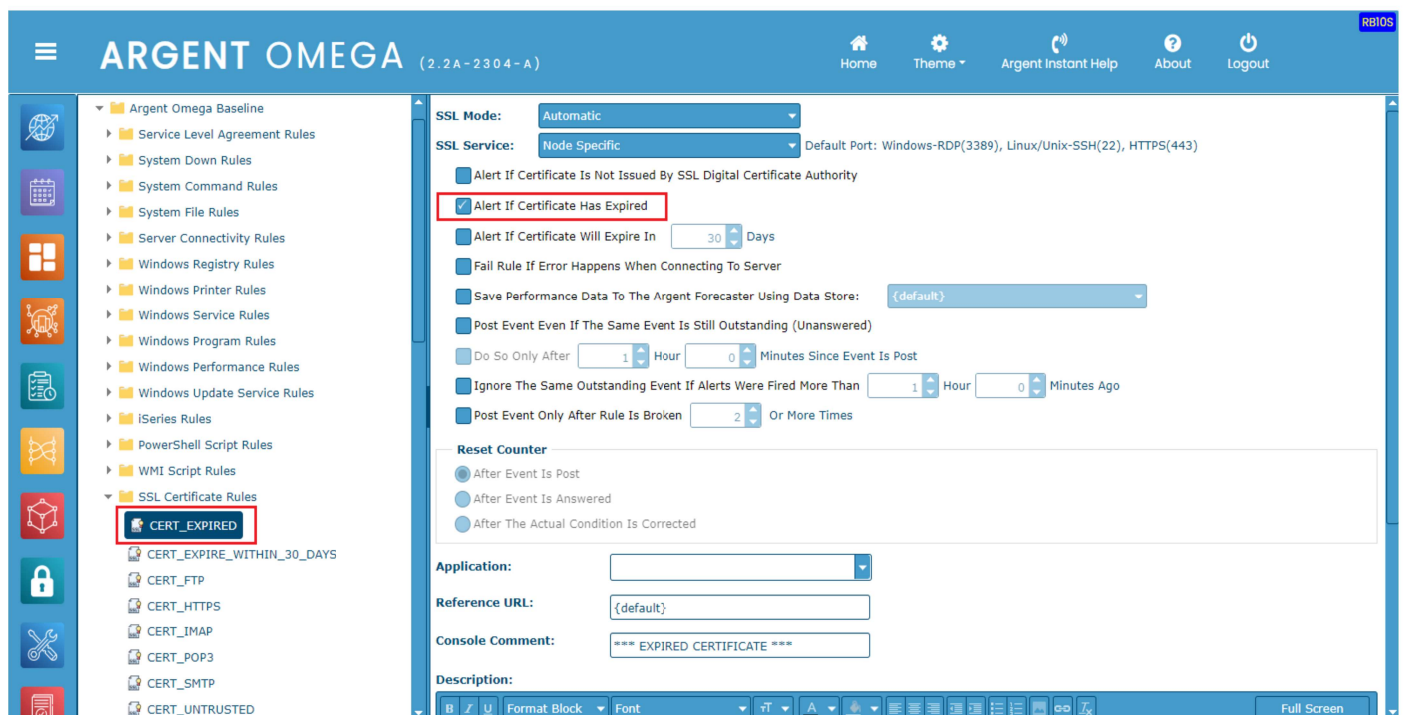
But for IT this is a new nightmare to ensure all your company's SSL certificates are both up-to-date **and will not shortly expire.**

How Argent Can Help

Argent Omega provides an easy way to automate monitoring the validity and expiration dates of all company's SSL certificates.

Argent Omega customers can start monitoring their SSL certificates within minutes using the built-in SSL Certificate monitoring Rules.

All at no cost to you.



The screenshot displays the Argent Omega web interface. The top navigation bar includes the 'ARGENT OMEGA' logo (version 2.2 A - 2304 - A) and user options like Home, Theme, Argent Instant Help, About, and Logout. A left sidebar lists various monitoring rules, with 'SSL Certificate Rules' expanded to show 'CERT_EXPIRED' selected. The main content area shows the configuration for this rule, including 'SSL Mode' (Automatic), 'SSL Service' (Node Specific), and several alert options. The 'Alert If Certificate Has Expired' checkbox is checked and highlighted with a red box. Other settings include a 30-day expiration warning, a fail rule for connection errors, and options for performance data storage and event posting. The 'Reset Counter' section has three radio button options, with 'After The Actual Condition Is Corrected' selected. The 'Application' field is empty, 'Reference URL' is set to '{default}', and the 'Console Comment' is '*** EXPIRED CERTIFICATE ***'. The 'Description' field is also empty. A rich text editor toolbar is visible at the bottom of the configuration area.

Argent Software - All Rights Reserved

Learn more by speaking to an Argent consultant today simply email

Support@Argent.com

We'll do all the heavy lifting for you.